

NATURAL SAPPHIRE

SAPPHIRE/CORUNDUM

"The most well known blue gemstone"

COLOR: violetish Blue to Blue to greenish Blue, very light to dark tone. "Royal blue" is the common trade-name for fine color of sapphire.

DURABILITY:

HARDNESS (Mohs scale): 9

TOUGHNESS: Excellent

STABILITY:

Heat———Stable

Light———Stable

Chemical——Stable

CARE and CLEANING:

Type of Cleaning *Advisability*

Ultrasonic cleaning...Usually safe, but never for fracture- or cavity filled stones

Steam cleaning.....Usually safe, but never for fracture- or cavity filled stones

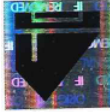
Warm, soapy water...Safe

MAJOR SOURCES/ORIGINS:

Afghanistan, Australia, China, Cambodia, Kenya, Madagascar, Mozambique, Myanmar, Nigeria, Sri Lanka, Thailand, Vietnam

OTHER FACTS:

- Sapphire is a birthstone of September.
- Common enhancement for sapphire are heat, and diffusion.
- Top quality blue sapphires are often described as "Royal blue".
- Beryllium treated in sapphires can only be tested using advanced gemological equipment such as "LA-ICP-MS, LIBS."



GCI REPORT

1910CDS5700

PRODUCT DESCRIPTION

Identification	Natural Sapphire
Species	Corundum
Color	Blue
Cut	Oval Mixed
Carat Weight	2.98 carats
Dimensions	9.74 x 7.88 x 4.10 mm
Enhancement	Indications of heating
GCI Code	1910CDS5700
Comment	The stone has only been tested using standard gemological equipment. The beryllium treatment cannot be tested using standard gemological equipment.

October 29, 2019

Gemologist

Pattarat T.

PATTARAT TERMPAISIT, G.G. GIA



GCI Lab

Bangkok

Jewelry Trade Center
Room 341 A/A, 3rd Floor, Silom Road
Bangrak, Bangkok, 10500

Chanthaburi

Chan Gems Building
Room D202/1, 2nd Floor,
189 Sichan Road
Mueang Chanthaburi District,
Chanthaburi 22000

E-mail: info@gcilab.com

Tel: +66 83 916 7158

LINE ID.....**gcilab**

WeChat.....**gcilab**

FACEBOOK.....**gcilab**