



# GEMOLOGICAL CONSULTANCY

## FANCY SAPPHIRE/CORUNDUM

Any other colors of corundum except blue and red are called "fancy sapphire"

Color-Change sapphire often change from violet to reddish purple.

**COLOR:** All colors are possible.

**DURABILITY:**

**HARDNESS (Mohs scale).....9**

**TOUGHNESS:.....Excellent**

**STABILITY:**

Heat-----Stable

Light-----Stable

Chemical-----Stable

**CARE and CLEANING:**

*Type of Cleaning*

*Advisability*

Ultrasonic cleaning....Safe, but never for fracture-stones

Steam cleaning.....Safe, but never for fracture-stones

Warm, soapy water....Safe

**MAJOR SOURCES/ORIGINS:**

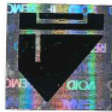
Afghanistan, Australia, China, Cambodia, Kenya, Madagascar, Mozambique, Myanmar, Nigeria, Sri Lanka, Thailand, Vietnam

**SPECIAL TRADE TERMS FOR FANCY SAPPHIRES:**

- Amethystine or plum sapphire - purple
- Golden sapphire - yellow or orangy yellow
- Padparadscha sapphire - pinkish orange to orange-pink
- White sapphire - colorless
- Beryllium treated in sapphires can be tested using advanced gemological equipment such as "LA-ICP-MS , LIBS."

ALL INFORMATION GIVEN REPRESENTS THE OPINION OF GCI GEMOLOGISTS. AT THE TIME OF TESTING, THE GCI SHOULD TAKE NO RESPONSIBILITY FOR ANY CONDITION OF THE GEMSTONE AFTER THE TESTING. THIS REPORT IS NOT A VALUATION OR APPRAISAL, AND THE CLIENT AGREES TO BE FULLY RESPONSIBLE FOR ITS USE.

## NATURAL SAPPHIRE



GCI REPORT

2005CDY1495

### PRODUCT DESCRIPTION

Identification	Natural Sapphire
Species	Corundum
Color	yellowish Green
Cut	Oval Mixed
Carat Weight	9.63 carats
Dimensions	14.99 x 11.48 x 5.67 mm
Enhancement	Indications of heating
GCI Code	2005CDY1495
Comment	The stone has only been tested using standard gemological equipment. The beryllium treatment cannot be tested using standard gemological equipment.

May 26, 2020

Gemologist

*Pattarat T.*

PATTARAT TERMPAISIT, G.G. GIA



### GCI Lab

#### Bangkok

Jewelry Trade Center  
Room 341 A/A, 3rd Floor, Silom Road  
Bangrak, Bangkok, 10500

#### Chanthaburi

Chan Gems Building  
Room D202/1, 2nd Floor,  
189 Sichan Road  
Mueang Chanthaburi District,  
Chanthaburi 22000

E-mail: info@gcilab.com  
Tel: +66 83 916 7158

LINE ID.....**gcilab**  
WeChat.....**gcilab**  
FACEBOOK.....**gcilab**